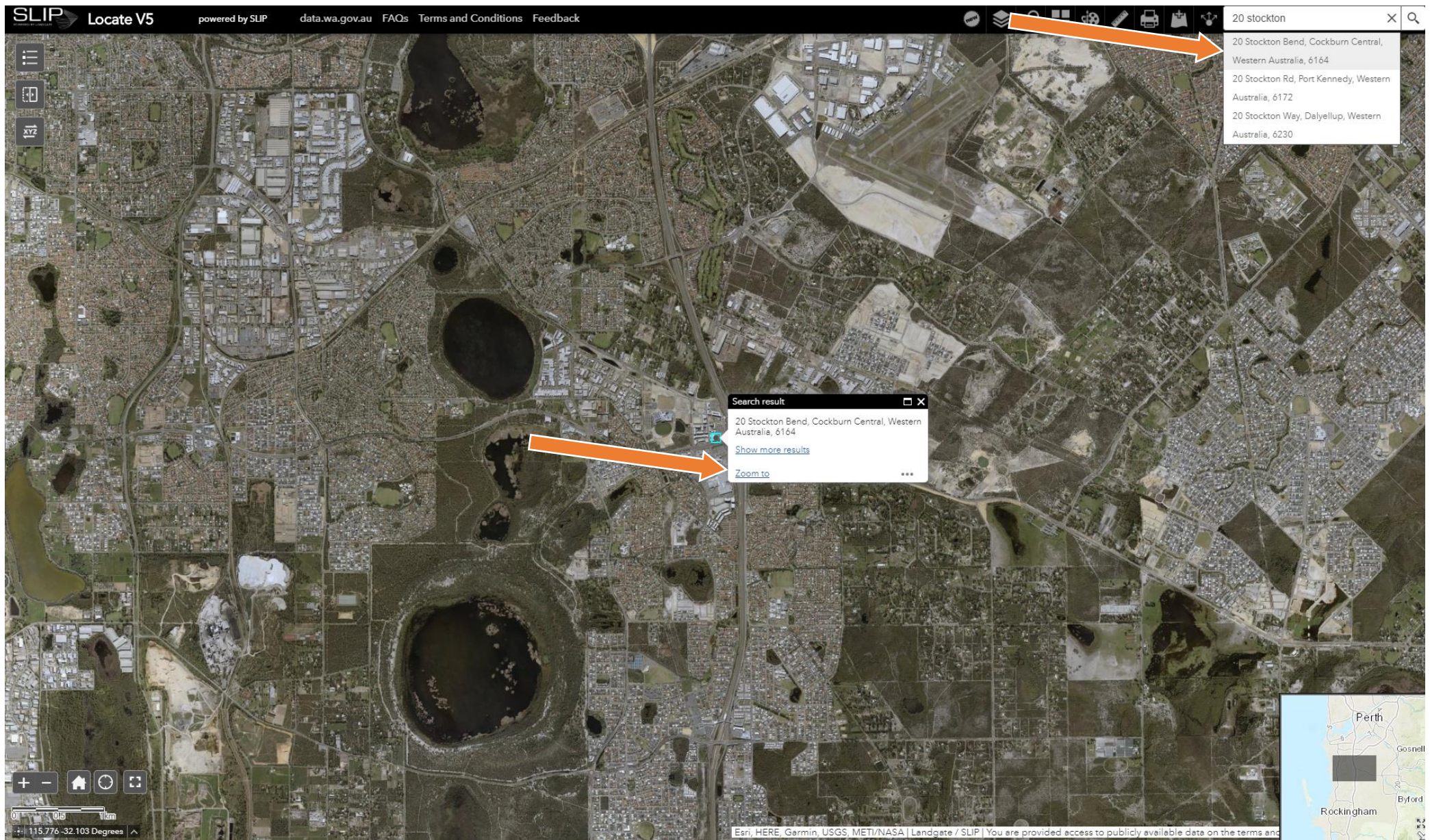


In the search box enter a property address, then select the correct address from the drop down list that appears. The map will update to display the area surrounding the selected property. Click “Zoom to” on the box that appears to zoom in further.



Next, click directly on the property shown on the map. A new box will appear, displaying information about the applicable ESL Category classification and charge. If this box displays “No information available.”, The property is not within a defined ESL boundary and is therefore classified as ESL Category 5.

The screenshot displays the SLIP Locate V5 web application interface. The top navigation bar includes the SLIP logo, the text "Locate V5", and "powered by SLIP". It also features links to "data.wa.gov.au", "FAQs", "Terms and Conditions", and "Feedback". On the right side of the navigation bar, there are icons for home, search, layers, and other functions, along with a search bar containing the text "20 stockton".

The main content area is an aerial satellite map of a city. A popup window is overlaid on the map, titled "ESL DFES Polygons (DFES-013): Metropolitan". The popup contains the following information:

Field	Value
Name	Metropolitan
Updated	16/5/2019
Category	1
esl_charge	In 2019-20 Category 1 properties pay \$0.014839 x the Gross Rental Value (GRV) subject to a minimum \$84 charge & a maximum charge of \$441 for vacant, residential & farming usages; and \$251,000 for commercial, industrial & miscellaneous usages

Below the popup information, there is a "Zoom to" button and a close button (X). In the bottom right corner of the map, there is a small inset map showing the current location within a larger geographic context, with labels for "Anang Park", "Beellar-Dr", and "Jan".

At the bottom of the screen, there is a scale bar showing 0, 30, and 60 meters, and a coordinate display showing "115.852-32.127 Degrees". A footer at the very bottom reads: "Esri, HERE, Garmin, USGS | Landgate / SLIP | You are provided access to publicly available data on the terms and conditions of use".

Zooming out will show the ESL Category boundary relevant to the selected property, highlighted in light blue.

The screenshot displays the SLIP Locate V5 web application interface. The top navigation bar includes the SLIP logo, 'Locate V5', 'powered by SLIP', and links to 'data.wa.gov.au', 'FAQs', 'Terms and Conditions', and 'Feedback'. A search bar on the right contains the text '20 stockton'. The main map area shows a satellite view of Perth, with ESL Category boundaries highlighted in light blue. The 'Metropolitan' category boundary is the most prominent, surrounding the city center. Other categories shown include 'North Category 3', 'South Category 3', 'Wundowie', 'Mount Helena', and 'Garden Island'. A tooltip window is open over the 'Metropolitan' boundary, displaying the following information:

ESL DFES Polygons (DFES-013): Metropolitan	
Name	Metropolitan
Updated	16/5/2019
Category	1
esl_charge	In 2019-20 Category 1 properties pay \$0.014839 x the Gross Rental Value (GRV) subject to a minimum \$84 charge & a maximum charge of \$441 for vacant, residential & farming usages; and \$251,000 for commercial, industrial & miscellaneous usages

At the bottom of the tooltip, there is a 'Zoom to' button and three dots. The bottom of the application shows a scale bar, coordinates '115.223 -32.071 Degrees', and a footer with the text: 'City of Perth, Esri, HERE, Garmin, USGS, NGA | Landgate / SLIP | You are provided access to publicly available data on the ter...'